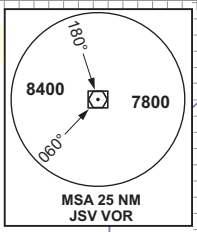
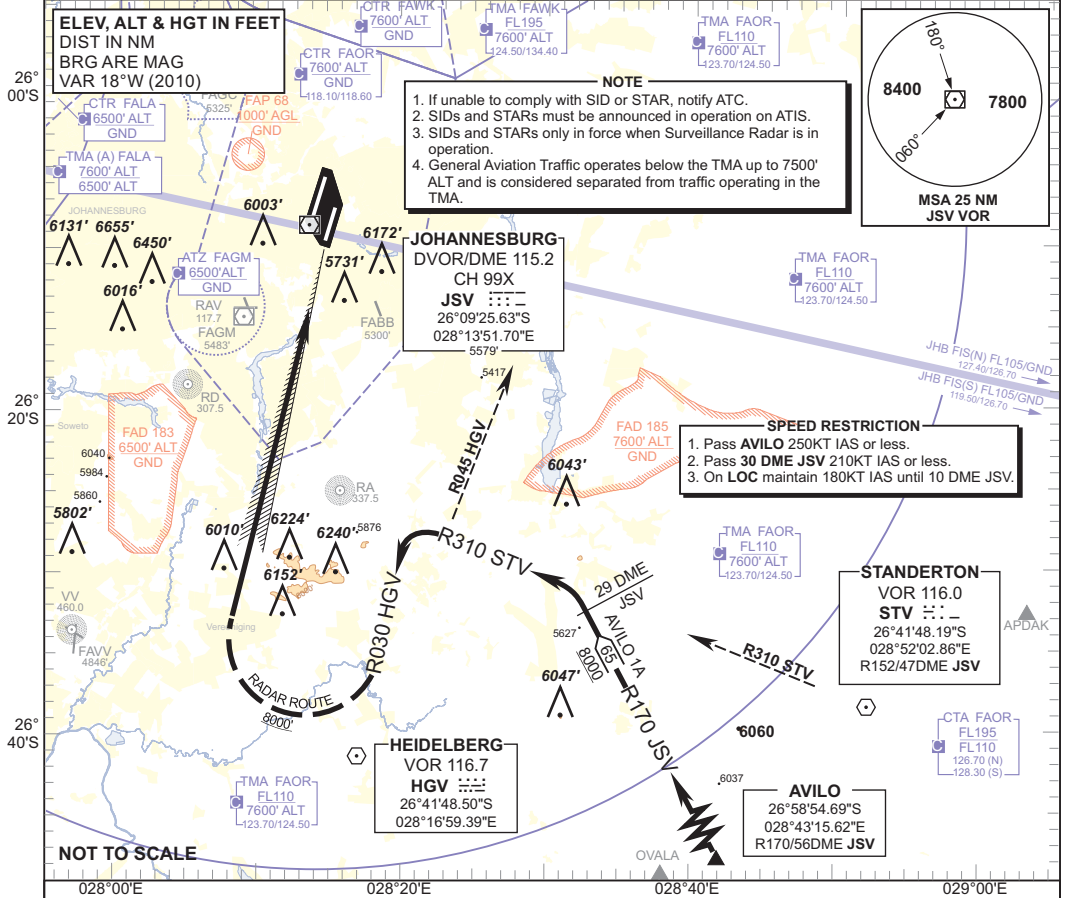


**STANDARD ARRIVAL  
CHART -  
INSTRUMENT  
(STAR)**

TRANSITION ALTITUDE  
**8000'**  
TRANSITION LEVEL  
**ATC**

RADAR APP S 124.50 TWR E 118.60  
E 124.50 W 118.10  
W 123.70 ATIS 126.20  
DIR 121.40 115.20  
ACC N 126.70 SMC 121.90

**JOHANNESBURG**  
(O.R. TAMBO INTERNATIONAL)  
**RWY 03R**  
AVILO 1A



- NOTE**
1. If unable to comply with SID or STAR, notify ATC.
  2. SIDs and STARs must be announced in operation on ATIS.
  3. SIDs and STARs only in force when Surveillance Radar is in operation.
  4. General Aviation Traffic operates below the TMA up to 7500' ALT and is considered separated from traffic operating in the TMA.

- SPEED RESTRICTION**
1. Pass AVILO 250KT IAS or less.
  2. Pass 30 DME JSV 210KT IAS or less.
  3. On LOC maintain 180KT IAS until 10 DME JSV.

**STANDERTON**  
VOR 116.0  
STV :::  
26°41'48.19"S  
028°52'02.86"E  
R152/47DME JSV

**HEIDELBERG**  
VOR 116.7  
HGV :::  
26°41'48.50"S  
028°16'59.39"E

**AVILO**  
26°58'54.69"S  
028°43'15.62"E  
R170/56DME JSV

**AVILO 1A  
RWY 03R**

Leave AVILO on R170 JSV (INBD). At 29 DME JSV on R170 JSV turn left to intercept R310 STV (OUBD). Crossing R045 HGV turn left to intercept R030 HGV (INBD) for radar vectoring onto ILS LOC RWY 03R.

**COMMUNICATION FAILURE PROCEDURE (Squawk 7600)**

**Before AVILO:** Proceed to STV and enter the STV hold descending to FL240, or if lower than FL240, last assigned level, and hold for minimum 5 minutes. Leave STV on the "After STV" Communication Failure Procedure.

**After AVILO:** Leave AVILO on R170 JSV (INBD) and descend to FL130. At R170/29 DME JSV turn left to intercept R310 STV (OUBD) and descend to FL110. On crossing R030 HGV descend to 8000' ALT. Crossing R197 JSV turn right onto track 350° to intercept the ILS LOC RWY 03R and complete a straight-in ILS APCH and land RWY 03R.

**Note:** Aircraft to route to the STV hold in Communication Failure Procedure.

**Caution:** Holding patterns below FL110 will be conducted partially outside controlled airspace.

In the event of a missed approach with the intention of diverting to an alternate aerodrome, proceed as follows:

- To the North and North-West: Follow the routing for the VASUR 3A SID.
- To the East and North-East: Follow the routing for the EGMEN 2A SID (Jet ACFT) or EXOBI 1A SID (Turboprop ACFT).
- To the South-East: Follow the routing for the APDAK 3A SID.
- To the West and South-West: Follow the routing for the RAGUL 3A SID.

CHANGE: SPEED RESTRICTION BLOCK